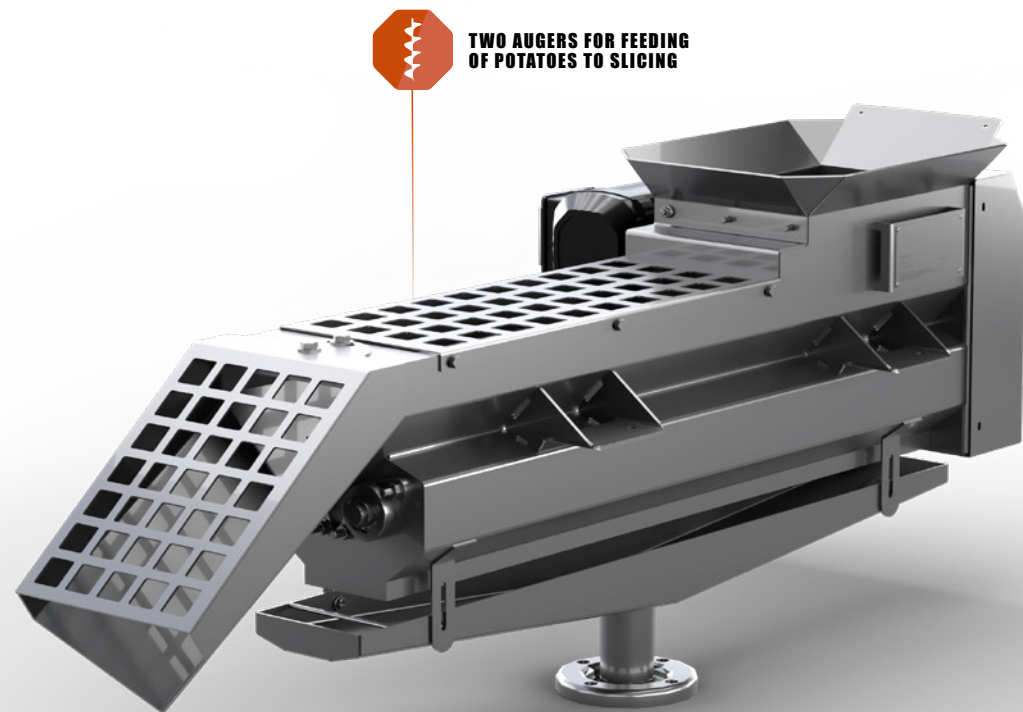


# SLICE FEEDER

The feeding of the cutting machines (slicers) is very important to ensure the even thickness of each individual potato slice. If the thickness of each slice is not even, the quality of each potato chip will not be consistent, because the blanching and frying stages in the potato process are designed for evenly sliced potatoes.

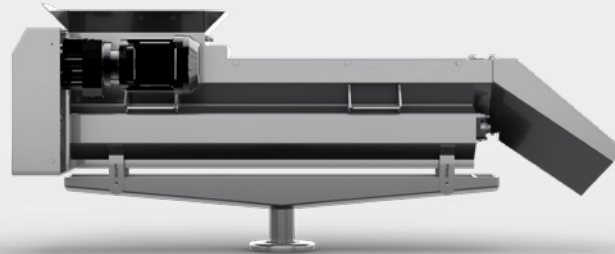
Best results are achieved by cutting one potato at the time. The Slicer Feeder ensures that the potatoes are fed one-by-one into the slicer. The Slicer Feeder discharge chute can be adjusted to the optimum entering angle approaching the slicer. The Slicer Feeder has two screw augers mounted in parallel. The potatoes are separated and fed forward individually.



## SLICE FEED ADVANTAGES

Two augers for feeding  
of potatoes to slicing

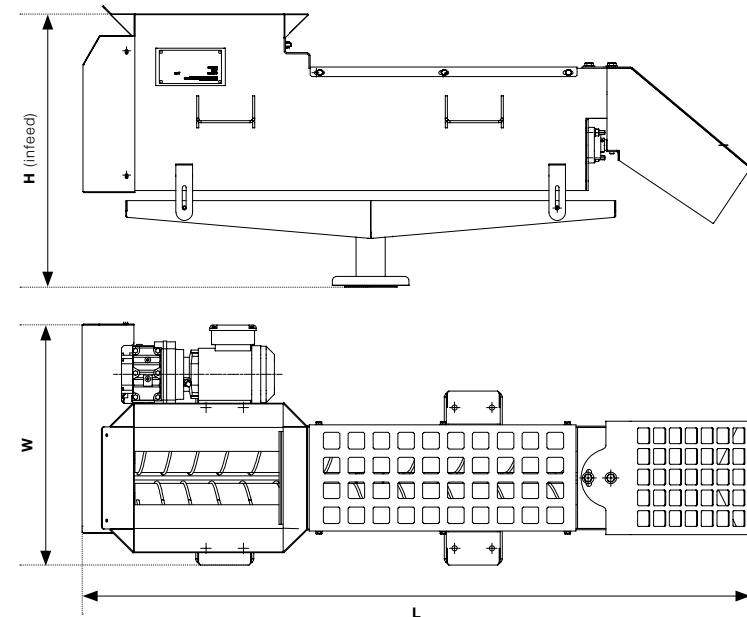
**SIDE**



**FRONT/ SIDE**



SLICE FEEDER	L (mm)	W (mm)	H INFEED (mm)
CCFEEDER	1480	520	550



**TWO AUGERS FOR FEEDING OF  
POTATOES TO SLICING**

Rosenqvists Food Technologies • Väverigatan 2  
SE 291 54 Kristianstad • Sweden • T: +46 44 590 41 40

[www.rosenqvists.com](http://www.rosenqvists.com)

